

Contacts 10.0



www.bollyaviation.com.au

www.bollycompositestocks.com



bolly@bollyaviation.com.au



61 8 8380 8396



61 8 8380 9083



Bolly Aviation

Bolly composite Stocks



Po Box 894 Virginia South Australia
5120



All Made in Australia...

Introducing New Products...

Owner operated in Adelaide...

Build it Strong - Build it LITE

Composite Stock Manual



Table of Contents

1. Introduction.....	2
2. Description & Specifications.....	4
3. Care & Cleaning.....	5
4. Quality & Assurance.....	6
5. Finishes.....	7
6. Repairs & Service.....	7
7. Accessories.....	8
8. Notes.....	9
9. Warranty.....	10
10. Contacts.....	11

Warranty 9.0

Complete refunds and returns

Our policy lasts 30 days. If 30 days have gone by since you received your purchase, unfortunately we can't offer you a refund or exchange. To be eligible for a return, your item must be unused and in the same condition that you received it, to complete your return, we require a receipt or proof of purchase.

Refunds (if applicable) Once your return is received and inspected, we will send you an email to notify you that we have received your returned item. We will also notify you of the approval or rejection of your refund.

If you are approved, then your refund will be processed, and a credit will automatically be applied to your credit card or original method of payment, within a certain amount of days.

Late or missing refunds (if applicable)

If you haven't received a refund yet, first check your bank account again.

Then contact your credit card company, it may take some time before your refund is officially posted.

Next contact your bank. There is often some processing time before a refund is posted.

If you've done all of this and you still have not received your refund yet, please contact us at bolly@bollyaviation.com.au.

Sale items (if applicable)

Only regular priced items may be refunded, unfortunately sale items cannot be refunded.

Exchanges (if applicable)

We only replace items if they are defective or damaged. If you need to exchange it for the same item, send us an email at bolly@bollyaviation.com.au and send your item to: Bolly Aviation, **Po Box 894 Virginia South Australia 5120**.

Shipping

To return your product, you should mail your product to: **Po Box 894 Virginia South Australia 5120**

You will be responsible for paying for your own shipping costs for returning your item. Shipping costs are non-refundable. If you receive a refund, the cost of return shipping will be deducted from your refund.

Depending on where you live, the time it may take for your exchanged product to reach you, may vary.

You should consider using a trackable shipping service or purchasing shipping insurance. We don't guarantee that we will receive your returned item. For full details of our Term & Conditions visit www.bollycompositstocks.com.au

Notes

Introduction 1.0

Technical Manual for Bolly Aviation Composite Stocks Document No: QA-017

Issue No: 1 Date 06/03/2015

This Manual has been prepared as a guide for the correct use and care of your Bolly Rifle Stock. It is the owner's responsibility to regularly check the Bolly web site at www.bollyaviation.com.au for applicable Service information such as bulletins or updates to manuals.

This document is controlled while it remains on the Bolly server. Once this no longer applies the documentation becomes uncontrolled.

1.1

CONGRATULATIONS

And thank you for purchasing your Bolly Rifle Stock. You are (arguably) using the best value, and lightest Stock on the market. Your Bolly Rifle Stock will give you many years of enjoyable and safe shooting.

From the Bolly Team.

1.2

The customer must make their own evaluation as to the suitability of using this product and / or components and **take full responsibility** to know and operate under the firearms regulations act for your state / country and for the appropriate use, care and safety of themselves and all persons who may be in the vicinity.

A Firearm in use is dangerous – so please take care.

1.3

WE DO NOT / CAN NOT ACCEPT RESPONSIBILITY FOR PROPERTY DAMAGE, INJURY OR DEATH RELATING TO THE USE OF THIS PRODUCT.

1.4 Welcome To Bolly Aviation

Bolly Aviation is 100% Australian owned and operated and has been in the Aerospace industry for over 25 years, designing and manufacturing carbon composite components.

Using Aerospace technology known for strength and light weight, Bolly Aviation, working with Firearms experts and competition shooters, has developed a series of Rifle Stocks for the serious sports shooter / hunter.

These light weight competition stocks are 100% weather proof and the most rigid in their class.

Accessories 7.0

Bolly is committed to backing up their product with parts, service and Accessories. They will continue to add to our product line, saving you the time of sourcing items.



Recoil Pads



DBM



Sling Studs



Full range of Atlasworx products



Bipods & Monopods



Rails



Flush Cups

Coming soon

Adjustable cheek pieces

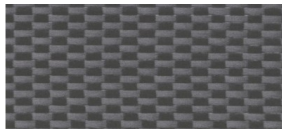
Carbon/Kevlar Rifle cases

Single shot adaptors

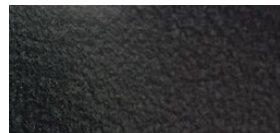
And much more!

Finishes 5.0

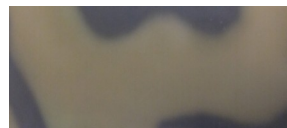
Bolly offers several finishers to their Stocks.



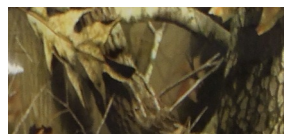
Ultra Light Full carbon finish



Baked grip texture



Airbrush camo or full custom



Hydro graphics of your choice

Repair & Service

To finalize our total commitment to offering the worlds best Stocks, we offer to all our Bolly customers our in-house service centre.

Description & Specifications

2.0 The Stock

The Design:

The master Stock was hand crafted, this procedure was chosen over CAD designing as it gave us the opportunity for a hands on feel as the stock is crafted into shape. The result was a very comfortable Stock.

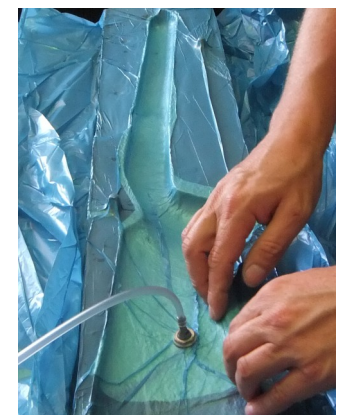
The mold is a sand cast with a tooling gel finish taken from the master Stock. This type of mold is very good for high production runs, super smooth finish and very stable during curing heat fluctuation.



2.1 The Construction:

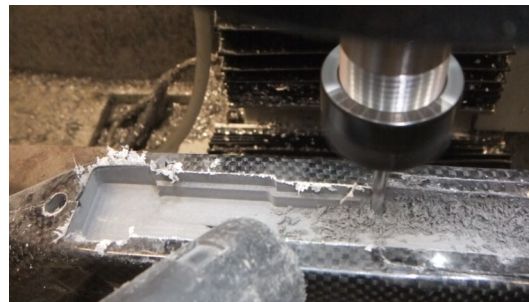
The Bolly Stock is constructed from the finest quality carbon fibre, and epoxy resins on the market. Several materials are used to make up the inner core, again using Aerospace technology, our core material aids in limiting shock, vibrations, harmonics and is very light weight.

Bolly uses a hand lay up vacuum bagging system, this is similar system Bolly uses for manufacturing the Aircraft Propellers.



2.3 The inletting:

Bolly inlets the Stocks to whatever action and trigger the customer requires. The inlet is drawn in CAD then using a sprut cam programme, our CNC mill is then programmed to mill the inlet for an exact fit of the action and trigger guard, thus saving time in bedding



Care & Cleaning 3.0

Long exposure to direct sunlight, moisture & humidity can over time discolour the Gel coat. (unless protection has been added)

When not in use your Stock will benefit being stored in a dark dry location eg **Gun Safe**. Generally the exterior surface can be kept bright by washing with water and mild soap or detergent, followed by a rinse with water and drying with a cloth or chamois.

Remove stubborn oil and grease with a cloth moistened with mineral turpentine, then wash with water & mild soap, rinse and dry as stated before.

Water spots or oxidation may occur on the stock, these spots can be removed using a mild polish or specialist water spot remover, however you must ensure that the polish is suitable for use on epoxy resin composites, and that it does not contain silicon. Always follow the instructions of the manufacture of the polish.



Safe to use

Quality & Assurance 4.0

All raw materials received are checked & given batch numbers that are sequenced to the Stock serial number for traceability.

The carbon cloth is cut to shape with a hydraulic press to ensure the correct shape & weight is cut every time.

The resin is mixed using digital scales that are regularly calibrated as per Aviation manufacturing regulations. All manufacturing is done to a standard as per the standard operating procedures manual. If a manufacturing change is made then the changes are documented and the manual is changed to reflect the change, a spec change will also indicate on the stock serial number. All stocks are given a tolerance weight, any Stocks that weigh in over or under tolerance are deemed rejects.

Each Stock receives a serial number eg **0025B1-R** this is its production run number, the spec that it was built from, the mold it was made from and the model.

Your Stock will be accompanied with a QA form with the invoice, date, customers name, description of the Stock & inlet, the out of mold weight, finished weight and details of accessories that may have been fitted as requested.

NOTE: The Bolly Ultra Super Light Stock has no surface fillers or any other cosmetic fillers to cover imperfections commonly found on composited parts, although Bolly manufacturing processes produces a near perfect part straight from the mold, some small imperfections may be found and are unavoidable, this is not the case with our painted or UV protected Stocks.

BOLLY		Bolly Rifle Stocks - QA / Batch Number		QA-016
All Bolly Optima Series Propeller Blades, Hubs and Stocks are fully QA documented. Please retain this record.				
Customer, Invoice & Date details. Please Note: If you are recycling these products - use the second set of fields.				
Invoice Number & Date		Customer Name (s)		
Serial Number				
Weight	Stock Description			
	Inlet Top			
	Inlet Bottom			
The Stock:				
Stock	Weight	Comments (in comments/minutes)		
Out of mold weight				
After Inlet weight				
Finish weight				
Maximum tolerance weight				
Stock Components				
Part Name (s)	Size / Type	Number of Components	Batch Number	Comments (in comments/minutes)
Recoil Pad				
Sling Studs				
Trigger Guard				
Other Hardware / Mounting				
Documentation:				
Document Description	Checked	Batch No. / Date	Comments	
This QA Sheet was completed by :				
Bolly Composite and Stocks: Hanger 1 Pk Box 604 Calton Grove Airfield Heath RD Virginia SA 5120				
http://www.bollyoptima.com.au				